

# UNDER CONSTRUCTION



RASMUSSEN  
GROUP

Vol. 43 · December 2023

Special Edition



## INSIDE THIS ISSUE:

## LETTER FROM THE CHAIRMAN



If you know me, you know I love our newsletter. In fact, Tim Mallicoat and I rarely disagreed on anything in our 30 years of working together; yet when Tim recommended that we move the newsletter to a digital format, I strongly resisted. I recall that exchange now with mixed feelings. The joy of remembering a close friend and fellow team member, working on an issue together and even jokingly poking fun at each other, and then the sadness of remembering that those conversations will not continue still resonates to this day. So many of you have shared similar experiences you had with Tim, like hearing his infectious laugh when you walked into a gathering. The tribute stamped in concrete at the Iowa State Fair says it best: "Tim Mallicoat,

1963-2023. Brother to many, friend to all." He was a popular friend wherever he went and could break the ice with any person on earth. This newsletter is a perfect vehicle to remember Tim as we can hold onto this edition as a special tribute. It is a treasure to recall all the dedications, memorials and activities that have taken place to honor Tim's memory and to remember the places we meet together as a work family to express what Tim meant to all of us. This newsletter will also showcase some of the Rasmussen Group's submission into the Associated General Contractor of Iowa's time capsule that was created to commemorate their 100-year anniversary. Tim would have loved our submission for the time capsule as he loved the Rasmussen Group companies and the team we have created. Thank you for all you do daily for the Rasmussen Group Companies. Stay safe and let's make it a great 2024 season.

▶ TRIBUTE TO TIM

▶ OUR PEOPLE  
ARE FAMILY AND  
FUTURE

▶ BIGGEST CHANGE IN  
50 YEARS



# TIMOTHY DEL MALLICOAT



Timothy Del Mallicoat, 60, of Pleasant Hill, IA, passed away at MercyOne Medical Center on June 20, 2023. Timothy was born on May 22, 1963, to Tom and Sharon Mallicoat in Boone, IA. He attended Boone High School, where he met his wife, Wendy Ross. In 39 years of marriage, they welcomed two children, Jordan and Sara Mallicoat.

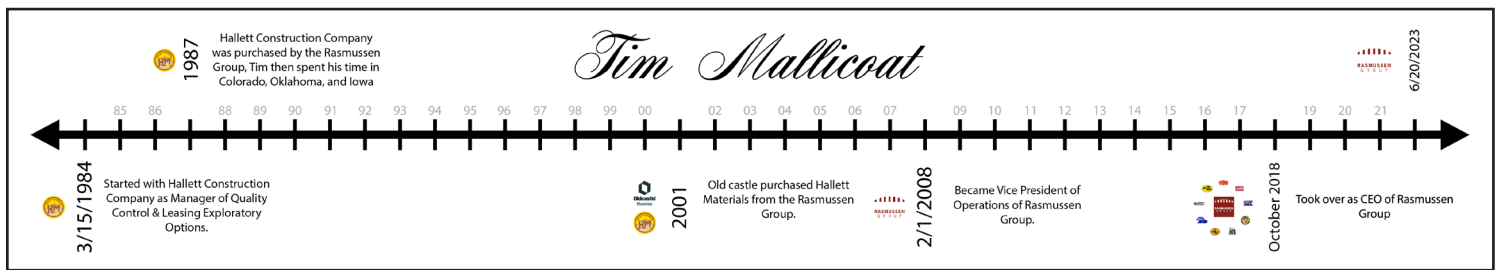
In 1984, Tim started his career with Hallett Materials until the company was acquired by Rasmussen Group. With Jim Rasmussen's knowledge and guidance, whom Tim admired, he became more involved in the entire operations. Soon after he was given the opportunity to also manage Iowa State Ready Mix. After several years of hard work and dedication he was appointed Chief Operations Officer. With his success and great ability it cleared the path for him to become CEO of Rasmussen Group to propel the business into a much greater

place. Throughout his impressive career, Tim was known for his unmatched passion whether it be with his career or within his personal life.

He loved traveling with his wife throughout the United States and other countries. Tim was an avid sports and racing fan. He enjoyed cheering on his favorite team the Minnesota Vikings and being a part of the racing community. But his biggest joy in life was watching any activity his children and grandchildren participated in.

Timothy is survived by his loving Wife, Wendy Mallicoat; Son Jordan and Wife Stephanie Mallicoat of Bondurant, Iowa; Daughter Sara Mallicoat of Dallas, Texas; Grandchildren Miles, Dawson, Shepard and Della Mallicoat; Mother Sharon Mallicoat; Brothers Trent (Jean) Mallicoat, Chris (Michele) Mallicoat and Mark Mallicoat; Sisters Nora Harris and Cindy Plummer.

He is preceded in death by his Father Tom Mallicoat.



# TRIBUTE TO TIM



## Employee Appreciation Event

Our Employee Appreciation event was a hit, bringing together colleagues for a fun-filled day of team spirit, great baseball, and heartfelt appreciation. At the beginning of the game on the scoreboard, a special tribute was made to Tim, and we all paused for a moment of remembrance. It was a memorable day with the Rasmussen Group companies.



## Tim & Wendy Mallicoat Scholarship Program

The Tim and Wendy Mallicoat Scholarship Program was established in honor of Tim Mallicoat, who was a passionate advocate for vocational education and recognized the importance of skilled workers in building a thriving community. The Mallicoats are dedicated to supporting students from Southeast Polk and Bondurant High Schools pursuing a career in the Trades Field. Their mission is to provide financial assistance to deserving graduates, enabling them to pursue their dreams and make a positive impact in the skilled trades industry. Foundation contributions can be sent via Venmo to @Wendy-Mallicoat, or checks can be mailed to 4720 Windsor Circle, Pleasant Hill, IA 50327. The Rasmussen Group is promoted the scholarship at the shop party and is matching all donations up to \$5,000.



## State Fair Beer Tent

The State Fair was one of Tim's favorite times of the year. This year's event was particularly special as several companies, including Concrete Supply and JMT Trucking, partnered together to work on the Iowa Craft Beer Tent Concrete Project to help bid farewell to the mulch, dirt, and mud that often plagued this area. Tim loved this day so much and was so passionate about the work the companies did that they left a stamp on the concrete. Next time you're at the Beer Tent, find Tim's stamp, take a picture, and say cheers. He was a brother to many, friend to all.



## Make A Wish Foundation Jolly Lights

Rasmussen Group is proud to be a part of this year's Jolly Holiday Lights. We have placed a special tribute star to honor and remember Tim Mallicoat. You can see his star along the walkway of the outlets during Jolly Holiday Lights from November 17, 2023 - January 7, 2024, at the Outlets of Des Moines.



## Races

If you were familiar with Tim, you'd know he loved all forms of motorsports, specifically Sprint Car, NASCAR, and IMCA stock and modifieds. The racing community united to honor him. KCP Racing and Tim's nephew, whom Tim supported in the modified ranks, prominently displayed 'Mallicoat' on their cars for the remainder of the season. Brett Moffitt, who the Rasmussen group has supported in the NASCAR ranks, displayed Mallicoat on his car in a few select races. The KCP year-end celebration acknowledged Tim's lasting legacy, and our yearly get-togethers at Knoxville and Eldora Speedway now have a stronger sense of closeness, highlighted by toasts in honor of Tim's impact.

## NOT JUST A CEO

Tim was not just a CEO; he was a visionary leader who garnered respect and admiration from all who had the privilege of crossing paths with him. His knowledge, expertise, and unwavering dedication to the construction field have shaped the landscape of our industry, inspiring countless professionals and leaving an enduring legacy.

The loss of such an extraordinary individual is deeply felt by all of us. As we mourn this immense loss together, remember and honor Tim's contributions, unparalleled work ethic, and unwavering commitment to excellence. His dedication to raising the bar and pushing the boundaries of what is possible in our industry will continue to inspire us. He would want us to continue our best in the various positions. Stay the course and keep doing the right thing.

# RASMUSSEN GROUP



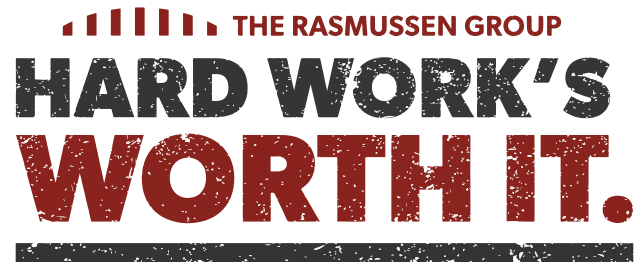
Kurt Rasmussen (Chairman of the Board), Lynette Rasmussen (Chief Executive Officer), Jeff Rasmussen (President), Troy Kunz (Chief Financial Officer), Tim Janssen (Chief Operating Officer)

## BIGGEST CHANGE IN 50 YEARS

At Rasmussen Group, we believe that the most significant shift in our industry will revolve around incorporating AI into our workforce, alongside a growing demand for sustainable products and energy-efficient materials. This changing landscape will pave the way for the creation of innovative infrastructure solutions.

We anticipate that our working conditions will see an improvement in safety measures, as we plan to implement cameras and sensors strategically to minimize accidents and errors. Our approach to work requirements might lean towards a more relaxed and casual style rather than becoming overly formal.

Rasmussen Group is positioned to lead the industry due to our commitment to innovation and willingness to adapt to change. We are firm believers in embracing new ideas. Moreover, our company foundation centers around fostering a sense of family and community, a core aspect of our values. This communal approach is something that resonates with people, as the draw towards a family-like atmosphere is timeless and enduring.



## MISSION:

To use our heavy construction experience to fulfill the unique needs of customers and communities while also valuing our employees and our strong family legacy.

## VISION:

Building tomorrow through today's hard work.

## VALUES:

### Do the Right Thing

No matter what, we always do what's right for our employees, customers, environment, and community.

### Go the Extra Mile

We bring quality and excellence to every job. And when we need a new solution, we do everything to find the right way forward.

### Treat Everyone Like Family

Our people are our family and our future. We value their safety and well-being. Like any family, we do our best work when we work together.

# OUR PEOPLE ARE FAMILY AND FUTURE.



# ARGEER TRANSPORT

Brad Kohlwes (Vice President), Tyler Akins (Operations Manager)



## WHAT WE'RE ALL ABOUT

Argee Transport provides heavy hauling services since 1962 for industries including energy companies (wind, oil, gas, and electric), equipment dealers, construction companies, tank manufacturers and girder manufacturers. Argee Transport has the authority to haul in the contiguous United States and Canada.

We have the equipment to move any item you need transported. If the equipment doesn't exist, our shop will build it to your specification. Due to our location in the Midwest, Argee Transport is poised to assist with your heavy hauling job. We can obtain all proper state permits, provide financial backing, and coordinate the proper insurance policy for your load.

## WHO WE SERVE

Based in Des Moines, Iowa with Terminals in Tulsa, Oklahoma, and Pine Bluff, Arkansas, we heavy haul all throughout the USA. Bridge Girders (concrete and steel), Wind Components, Construction and Ag Manufacturers, heavy industrial manufacturers.

## LARGEST CUSTOMERS

Veritas Steel, Vermeer Manufacturing, Concrete Industries, Coreslab, Astec.

## OUR WORK

The heaviest/longest load to date would be a railroad beam from Gary, IN, to Painesville, OH. Our overall dimension was 180' long x 12' wide x 15' tall with a gross weight of 358000 lbs. The widest load we've hauled to date was a 26' wide piece that went on the jumbotron at Jack Trice Stadium on the Iowa State campus.

Routes are determined by the jurisdiction you're traveling through. All states have online permit systems that will analyze the dimensions and weight of the load you're applying for and give you the route to travel. The biggest pain in routing trucks is road construction. Sometimes, we'll run into bridges that aren't approved for certain weights, and you'll have to route around those. You don't know this information until you apply for a permit.

## OUR DRIVERS

Average Amount of Dead Head Miles: 300

How Often Are Drivers Home: Roughly every other week. During the slower winter months, it's every weekend.

## OUR EQUIPMENT

- 14 Trucks
- 2 Escort Pickups
- Axle RGN Lowboy
- Drop Deck Expandable
- Detach Double Drop
- Expandable Flatbed
- Expandable Double Drop
- 10 Axle Lowboy
- 13 Axle Lowboy
- Dropside Lowboy
- Flatbed
- 9 Axle Lowboy
- 11 Axle Lowboy

# CIRCLE V SPECIALIZED

Jeff Rasmussen (President), Kent Kirby (Operations Superintendent),  
Jack Harkreader (Sales & Operations)



## WHAT WE'RE ALL ABOUT

Circle V Specialized is an industry leader in heavy hauling and oversized loads and is located in the middle of the country for client convenience. The only limit to Circle V Specialized heavy hauling capacity is what is legally allowed on the highways.

## OUR WORK AND DRIVERS

The AMINE CONTACTOR, weighing a record-breaking 720,000 pounds, marked the heaviest load to date, as we transported it from Houston to Mentone, TX, covering the journey across Texas at an average speed of 30 mph over the course of a week.

The most fascinating transports that Circle V is hired for involve turntable loads, commonly known as 'jeep and dolly' loads. These operations entail various prerequisites before and during the transport process, navigating through public roads, highways, and city streets. The communication within the transport team is always intriguing to witness and hear.

The average deadhead distance is around 100 miles, serving as a standard benchmark. However, there are instances where we cover just a few miles before loading our trailers, while other opportunities may require us to deadhead to San Diego, CA for loading. The 100-mile figure proves to be a reasonable average, given the diverse distances we often travel.

How are routes calculated? Routing is determined through collaboration between state permit departments and our Circle V permits team. While some transportation permits are automatic, others may require several weeks, or even months, to secure approvals.

Number of Trucks and Trailers: We have 6 trucks and 20 trailers, many of the trailers can be configured different ways to accommodate a particular transport.

How Often Are Drivers Home: Average 1 to 2 weekends/Month

## LARGEST CUSTOMERS

We work for some call-in no name customers who have a "one off" shipment to make, we work for publicly traded companies, and we also work freight brokers who approach us with oversized and heavy transportation needs.

## BIGGEST CHANGE IN 50 YEARS

The primary challenge we face is the shortage of new truck drivers and individuals willing to undertake labor-intensive work in the trucking industry. At Circle V Specialized, we're addressing this by fostering a positive work environment, providing comprehensive training, and offering competitive incentives. As we navigate these challenges, we eagerly anticipate Circle V Specialized's growth over the next 50 years, confident that our commitment to excellence will propel us forward in the evolving landscape of the trucking industry.

# CONCRETE SUPPLY - IOWA & OMAHA

Quenten Nielsen (Sales Rep - Southwest Iowa), Chad Saemisch (Sales Rep - Metro Des Moines), Keith Kuennen (Vice President - Iowa), Kurt Norland (Sales Rep - West Central Iowa)



Chris Rogers (Vice President - Nebraska), Tate Sutton (Sales Rep - Omaha), Chris Druskis (Sales Rep - Omaha), Brian Hensley (Operations Manager)

## WHAT WE'RE ALL ABOUT

Serving as the premier ready-mix supplier for over 60 years, Concrete Supply takes pride in delivering the highest quality concrete on time, safely, and with the best service. Concrete Supply has over 25 plants servicing the Des Moines metro area, West Central Iowa, Southwest Iowa and Omaha, Nebraska.

### IOWA

Number of Employees: 226

Average Hours Worked: 55-65 Hours/Week

Number of Ready Mix Trucks: 172

Number of Plant Locations: 20 + 2 Portable Plants

Number of Mix Designs: 750

Recent Milestones: August 2022 - 132,000 cubic yards

### OMAHA

Number of Employees: 89

Average Hours Worked: 49.5 Hours/Week

Number of Ready Mix Trucks: 70

Number of Plant Locations: 4

Number of Mix Designs: 196

Cost of New Mixer Truck: \$208,000.00 (2014) \$265,000.00 (2023)

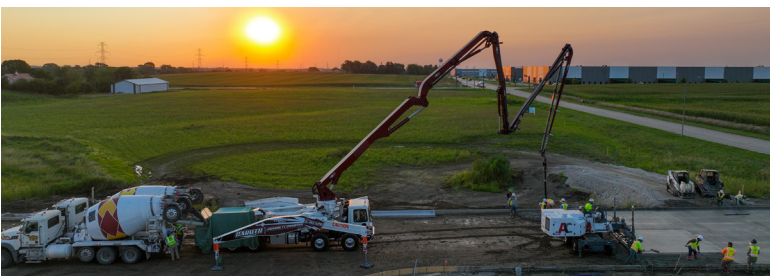
Recent Milestones: November 2023 - 75,000 cubic yards and 21,000 cubic yards in one week

## BIGGEST CHANGE IN 50 YEARS

In the next 50 years, CSI envisions some really big changes. One of the coolest things might be trucks driving themselves without human drivers. It's like how drones are operated from far away but with trucks. This could help because we wouldn't have to worry as much about finding enough drivers. These self-driving trucks could follow specific schedules to make deliveries more efficient and timelier.

We're also looking forward to improving things between our different locations. It could be like connecting puzzle pieces, so everything runs smoothly. And we hope to team up with more family-owned businesses that share our values. This way, we can keep growing and moving forward.





# GRIMES ASPHALT & PAVING

Matt Yonker (General Manager), Tom Pike (Estimator/Project Manager),  
Ray Svodoba (Plant Manager), Jason Yonker (General Superintendent)



## WHAT WE'RE ALL ABOUT

Grimes Asphalt and Paving Corporation was founded in 1972 and is based in Des Moines, Iowa. Grimes Asphalt and Paving is in an optimum position to serve our clients with the latest technology in equipment and high-capacity asphalt plants to service all of Central Iowa. Our experienced employees ensure a safe, efficient, and quality project. Our Des Moines, Iowa, asphalt paving company offers expertise in producing and paving hot mix asphalt. Making us your one-stop in paving construction.

## OUR WORK

Average Hours Worked: 65/Week

Average Tons Laid: 7500/Week

Average Project Size: 1875 Tons

## BIGGEST CHANGE IN 50 YEARS

The most significant change we will witness over the next 50 years is the integration of automation into the construction industry and utilizing artificial intelligence. Asphalt pavers and rollers will be remotely controlled from off-site locations. Another substantial transformation will come in the form of electric equipment and vehicles, which will eliminate the need for gas and diesel.

Asphalt will remain a viable pavement option for streets and parking lots. Asphalt is 100% recyclable and constitutes a perpetual pavement. This means that it doesn't need to be removed entirely once installed. Instead, the top layer can be milled and replaced at the end of its life expectancy, extending the pavement's life span and reducing rehabilitation costs. Ongoing advancements include the use of polymer-modified binders. The addition of plastics to asphalt extends its life and durability and helps divert plastics from landfills.

## OUR SERVICES

- The Asphalt Paving
- Asphalt Production
- Milling/Pavement
- Scarification
- PCC Paving and Curb and Gutters
- Soil Stabilization
- Roller Compacted Concrete
- Crack and Sealing
- NewRoad Hybrid Polymer
- Asphalt Additive
- Recreational and Specialty Paving
- Asphalt Recycling

# HALLETT MATERIALS

Wade Carroll (Sales Manager), Jacob McCurry (Operations Manager)



## WHAT WE'RE ALL ABOUT

Since 1981, Hallett Materials has provided the highest quality materials available. We offer concrete sand, gravel and construction sand for Houston and the surrounding areas. The design of our plants ensures quick pit turnaround time so drivers can get in, load, scale and get out quickly and back to the job site.

## LOCATIONS

Hallett currently operates in two locations, Porter and Hempstead, and we are actively exploring potential sites along the Trinity River as a replacement for our Hardin Plant.

## OUR WORK

Number of Employees: 40 - 17 of which have been with us for over 10 years

Tons of Material Sold in 2022: Over 2.8 million

Diesel Fuel Burned: On average we burn 45,000 gallons/Month

Cost of New Haul Truck: Over \$600,000

Electricity Used: 830,000 kW/Month at Porter

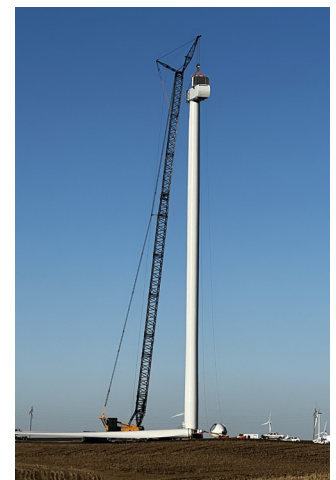
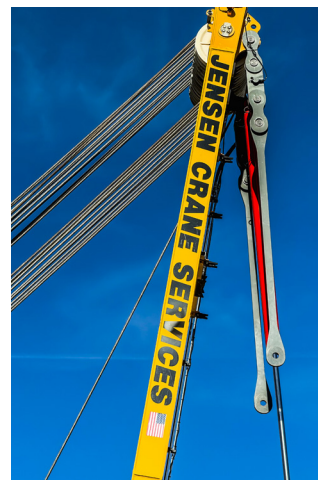
The Sandra Kay Dredge at Porter has a 1000 horsepower electric motor powering the pump and it moves over 4,500 gallons of water every minute.

## BIGGEST CHANGE IN 50 YEARS

We believe that the shift from diesel-powered machinery to electric and battery-operated equipment is imminent for our industry. Additionally, we foresee the importation of manufactured sand into the Houston Market, as the readily accessible sand deposits become depleted, prompting the exploration of alternative sources. At Hallett Materials, we are committed to staying at the forefront of technological advancements and sustainable practices to ensure the longevity and environmental responsibility of our operations. The coolest uses of technology we employ are using drones for stockpile measurements and the scale kiosk where our customers can generate their own tickets. As we celebrate our 1-year milestone, we are excited about the future and anticipate significant growth. Looking ahead, we are particularly enthusiastic about the next 50 years, during which we anticipate innovative developments, increased efficiency, and a continued commitment to environmental stewardship. Hallett Materials eagerly looks forward to witnessing and contributing to the remarkable growth and advancements that lie ahead for our company.

# JENSEN CRANE SERVICES

Ron Sims (Vice President), Scott Mowery (Director of Business Development)



## WHAT WE'RE ALL ABOUT

Jensen Crane Services, conveniently located in the Midwest at the crossroads of I-80 and I-35, is your premier crane services provider for heavy lift and specialized transportation services. Jensen Crane Services provides cranes for hire in the Fully Operated and Maintained (FOM) crane market. Our seasoned NCCCO crane operators, OSHA-trained riggers, and signalers provide #1 safety performance and A1 service for all crane service needs. We are committed to safety and bringing a professional and reliable service to the job site.

## OUR WORK

We specialize in the wind energy market, focusing on the installation of new towers and maintenance of existing ones. We work in 12 states: South Dakota, Nebraska, Kansas, Missouri, Iowa, Minnesota, Wisconsin, Illinois, Indiana, Michigan, Ohio, and Texas. Our dedicated teams typically work an average of 60 hours a week, occasionally ranging from 40 to 80 hours. Operating year-round, we pride ourselves on efficient service, with older towers experiencing rotor downtime and recovery within a day, while more complex towers may take up to a week. Blades replacement is a swift process, usually completed within a day or two.

## MILESTONES

In 2022, our most substantial undertaking involved the repowering of 154 towers across Wisconsin and Iowa. Over the course of six months, we efficiently managed nine crane packages to complete this project. As we prepare for our upcoming challenge, we are set to tackle our heaviest lift yet—a nearly 175,000-pound nacelle. These towering structures reach an impressive 350 feet, demonstrating our dedication to enhancing renewable energy.

## BIGGEST CHANGE IN 50 YEARS

We believe that one of the most significant changes and challenges in the construction industry will be finding a dedicated workforce and qualified help. Every individual working at JCS has been referred by someone we have previously worked with, emphasizing the importance of trusted connections within our team.

Currently, our industry is witnessing a trend towards larger and heavier towers, making the use of massive cranes necessary. Technology is evolving, and in the future, there will be potential advancements that could lead to the use of lighter components in construction. We look forward to seeing our company grow and develop over the next 50 years, anticipating the incorporation of exciting new technologies and methodologies that will change the industry in ways we can only imagine.

## OUR EQUIPMENT

- 2 LR1300
- 1 LR1600
- 1 LTM1750
- 4 Assist Cranes
- 6 Semis
- 6 Forklifts

# JMT TRUCKING

Jeff Wangsness (President), Jeff Vroom (Sales Representative),  
Kenny Bauman (Operations Manager)



## WHAT WE'RE ALL ABOUT

From our humble beginning in 1994, JMT Trucking started with a fleet of 3 trucks and has grown to its present fleet of 86 trucks operating as a family business. Quality service and safety have always been our number one goal. JMT Trucking has two locations, Des Moines, Iowa and Ames, Iowa. From these two locations, we have the ability to serve the Central Iowa area effectively. When you add our modern fleet of trucks to our highly trained drivers, we are able to offer a very high level of quality service. With our drivers being put through a training program, they are continually improving their performance skills, which helps our customers complete their projects efficiently, safely and on time.

## LARGEST CUSTOMERS

Concrete Supply, Grimes Asphalt, McAninch Corp, C.J. Moyna, Hubbell Homes, Peterson Contractors, and Reilly Construction

## OUR DRIVERS

Current Fleet: 85 trucks which consists of: Aluminum Box Trucks, Steel Box Trucks, Belly Dumps, Side Dumps, Slinger Trucks, Trucks and Pups.

Cost of New Truck: On average \$255,000/Truck

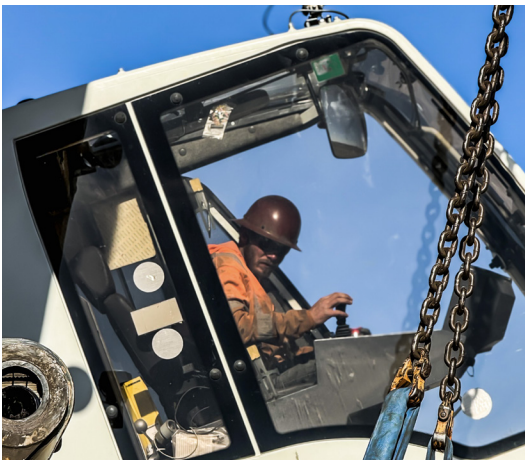
Cost of Fuel: On average \$3.75/Gallon

## BIGGEST CHANGE IN 50 YEARS

We believe that one of the most significant changes and challenges in the trucking and construction industries will be finding a dedicated workforce willing to put in the effort during extended work hours. Another major challenge pertains to government regulations concerning emissions and the advancement of electric vehicle technology.

Looking ahead, we are excited to witness the evolution of JMT Trucking over the next five decades. With an eye on innovation and adapting to industry trends, we will always be willing to navigate the challenges and embrace growth opportunities. This vision will drive JMT Trucking's success as we continue to serve the transportation and construction sectors for many years to come.







P.O. Box 3333  
 5550 NE 22nd Street  
 Des Moines, Iowa 50313  
 515.266.5173 ph  
 515.266.9857 fax

WWW.RASMUSSENGROUP.COM

PRSR STD  
 U.S. POSTAGE  
**PAID**  
 DES MOINES, IA  
 PERMIT NO. 4976

